

Alberta Early Child Development (ECD) Mapping Project

Presentation to the Alberta School
Boards Association Board

Edmonton, May 8, 2009

“The earliest experiences of childhood reach long into adulthood...Early experiences establish the architecture of the brain and the developmental trajectories for the learning, behaviour, and health of individuals and populations.”

McCain, Mustard and
Schanker
Early Years Study (March
2007)

Early Years



PROJECT PURPOSES . . .

- To find out about the developmental progress of the preschool children throughout Alberta
- To find ways of helping communities improve the developmental trajectories in the first four years of life.

PROJECT GOAL

Improved Early Childhood Outcomes



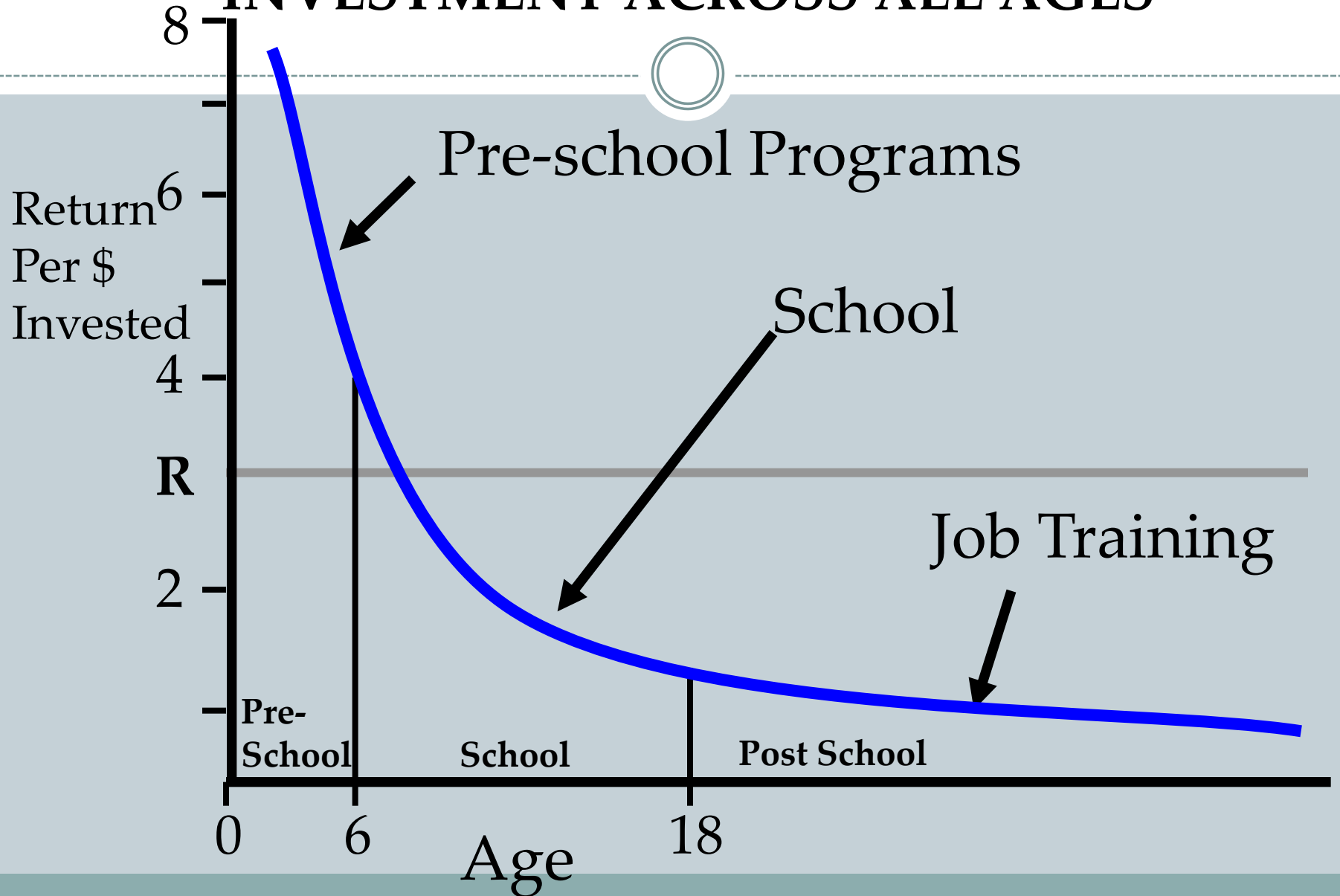
PROJECT CORNERSTONES

- Criticality of the *early years* before school
- Importance of *socio-economic* influences on the family and early childhood development
- Important role of *community support* for families and young children

THE EARLY YEARS . . .

- Before age 5
- Sensitive period re impacts
- Critical for later development

RATES OF RETURN TO HUMAN DEVELOPMENT INVESTMENT ACROSS ALL AGES



Adapted from Founders' Network (Carneiro, Heckman, Human Capital Policy, 2003)

SOCIO-ECONOMIC INFLUENCES . . .

“SES is associated with social and developmental outcomes: birth weight, academic achievement, physical and mental health, literacy, criminal behaviour and life expectancy.”

McCain, Mustard and Schanker
Early Years Study (March 2007)



COMMUNITY INFLUENCES . . .

“Strong communities provide a vital support to families with young children by encouraging opportunities for optimal early childhood development.”

Dr. Clyde Hertzman Director
Human Early Learning Partnership (HELP)



ECD Mapping PROJECT COMPONENTS

- Early Development Instrument (EDI)
- Statistics Canada Socio-economic Data (SES)
- Community Assets
- Mapping of Data
- Mobilizing Communities

Early Development Instrument (EDI)



Five developmental domains:

- Physical Health and Well-Being
- Social Competence
- Emotional Maturity
- Language and Cognitive Development
- Communication Skills and General Knowledge

Profile of Development



Socio-demographic Data (SES)

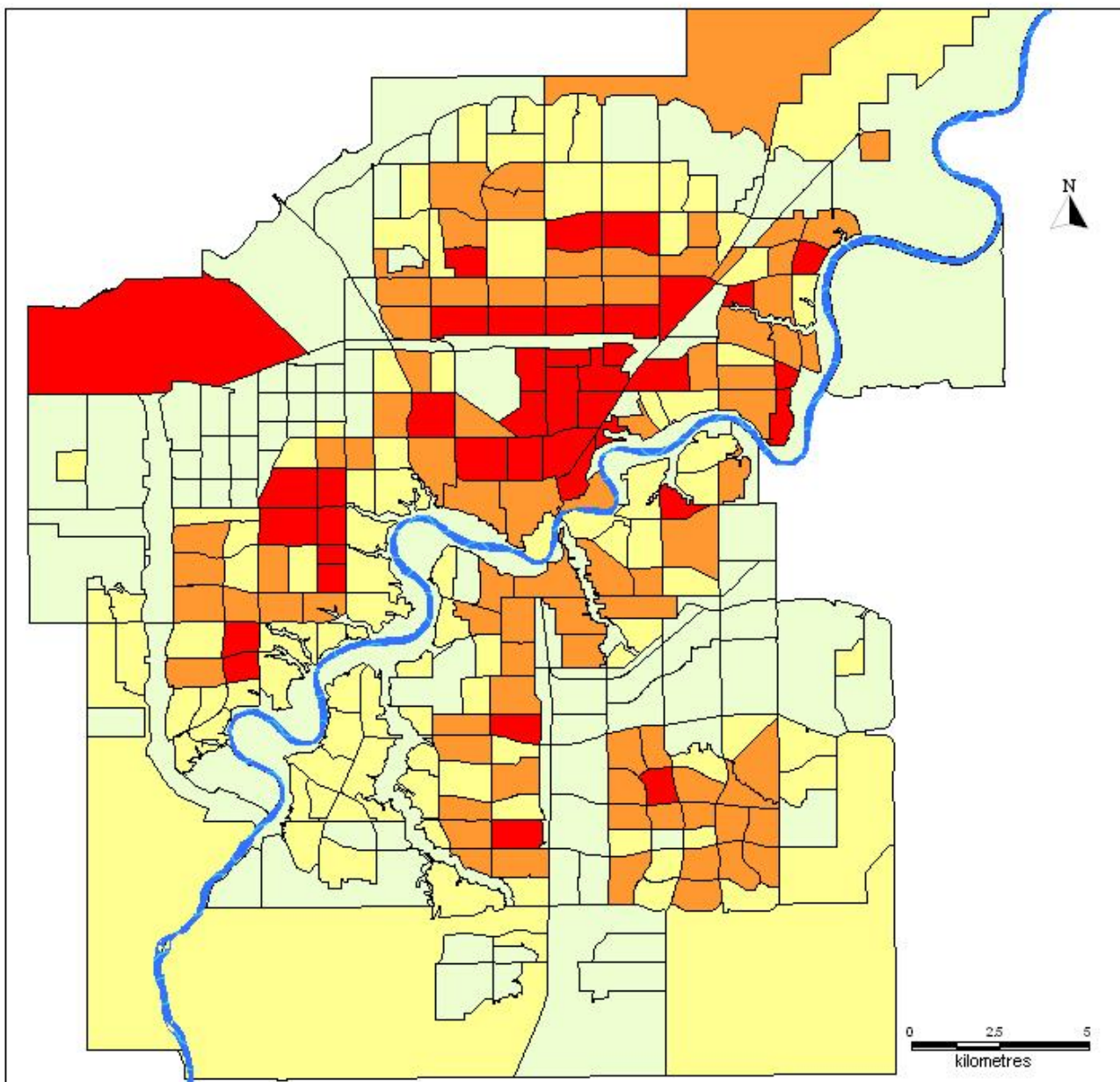
- Statistics Canada data from 2006
- Socio-economic factors that influence children's development
- Index each community will be created using factors such as:
 - average family income
 - household moves
 - mother's level of education

Community Features Mapping

- Inventories of local services, programs and facilities for families with young children
- Information from the communities on the qualities of their environments that may affect early development

Early Childhood Development Community Mapping Project (Edmonton)

Social Vulnerability Levels of Edmonton Neighbourhoods



Legend

Social Vulnerability Levels

- High
- Medium
- Low
- No Data Collected

Social Vulnerability Indicators:

1. Unemployment Rate
2. Low Income
3. Education
4. Lone Parent Families
5. Language
6. Immigration
7. Mobility
8. Owned Dwellings
9. Government Transfer Payments

Data Source: 2001 Census

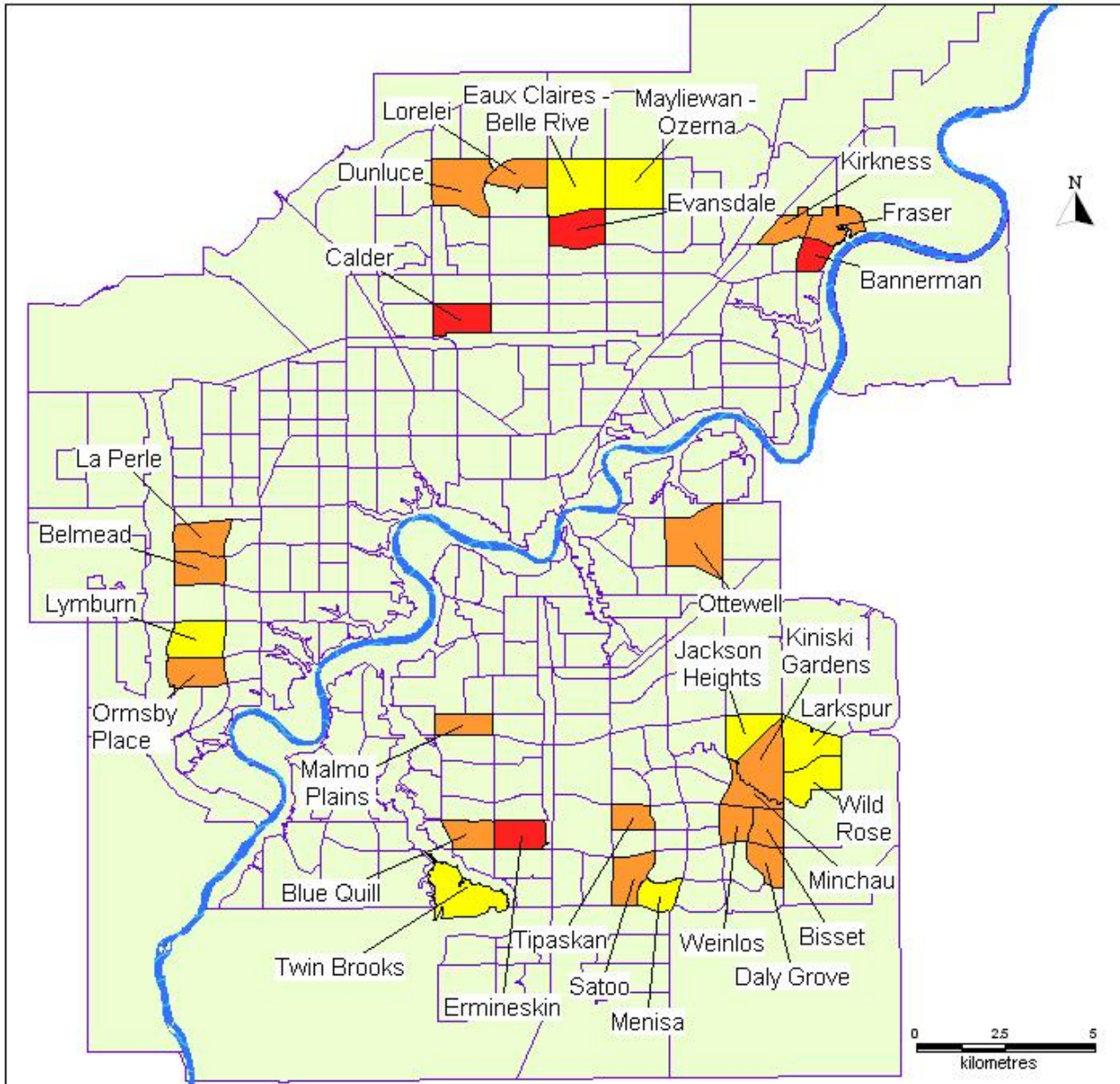
The information presented in this map is accurate to the best of our knowledge using the data available.

We accept no liability for the use or misuse of this information.

M.A.P.S. Edmonton & Area, 11/0005

Early Childhood Development Community Mapping Project (Edmonton)

Social Vulnerability of Study Neighbourhoods



Legend

Social Vulnerability Levels

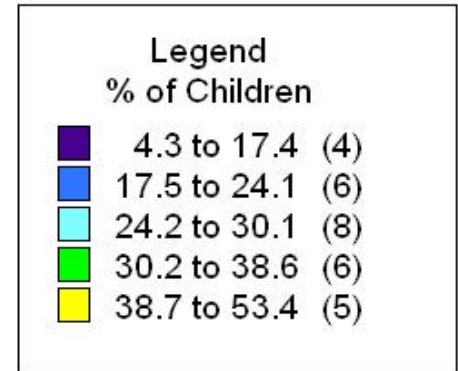
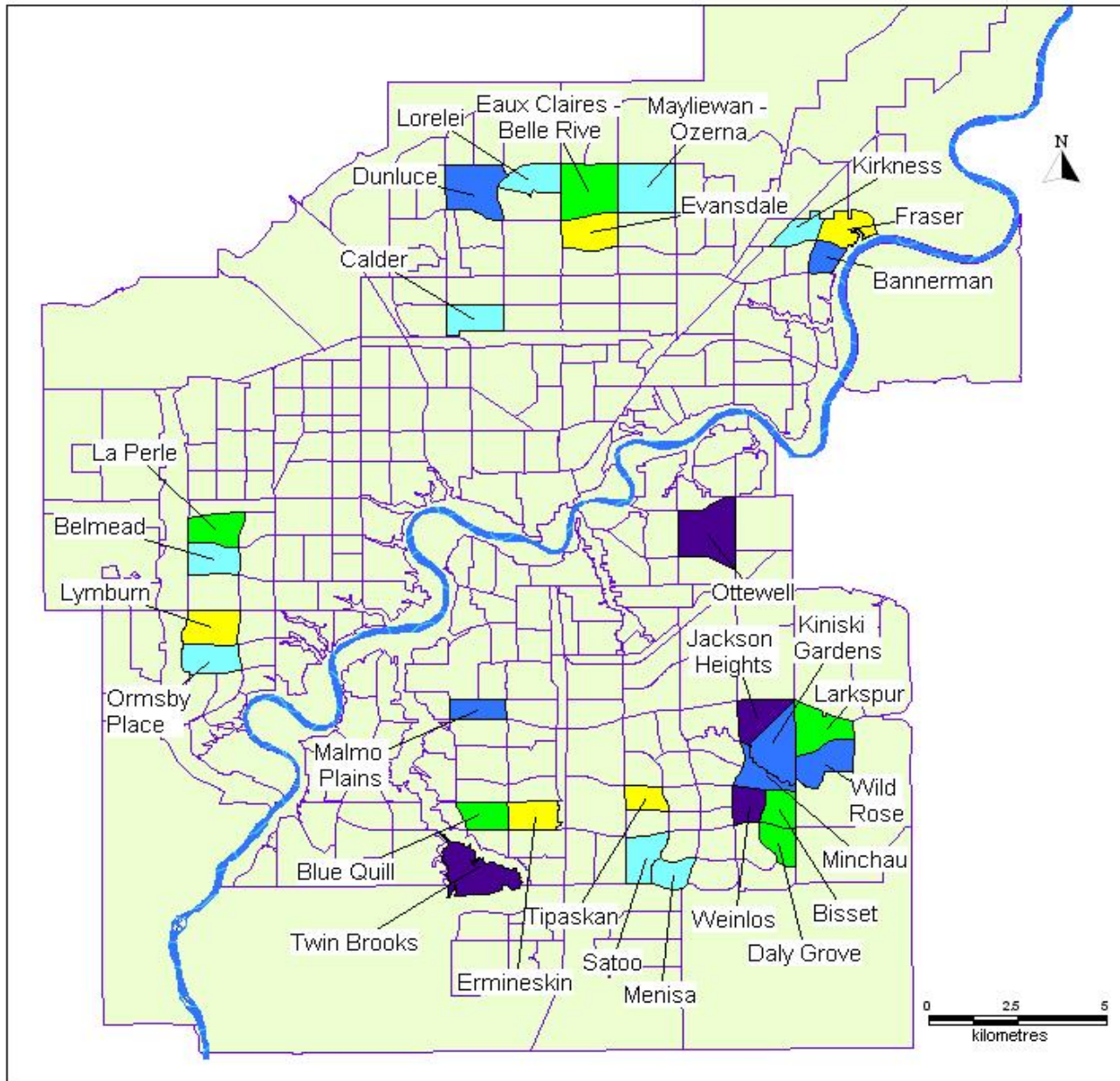
- High
- Medium
- Low

- Social Vulnerability Indicators:
1. Unemployment Rate
 2. Low Income
 3. Education
 4. Lone Parent Families
 5. Language
 6. Immigration
 7. Mobility
 8. Owned Dwellings
 9. Government Transfer Payments

The information presented in this map is accurate to the best of our knowledge using the data available. We accept no liability for the use or misuse of this information.

Early Childhood Development Community Mapping Project (Edmonton)

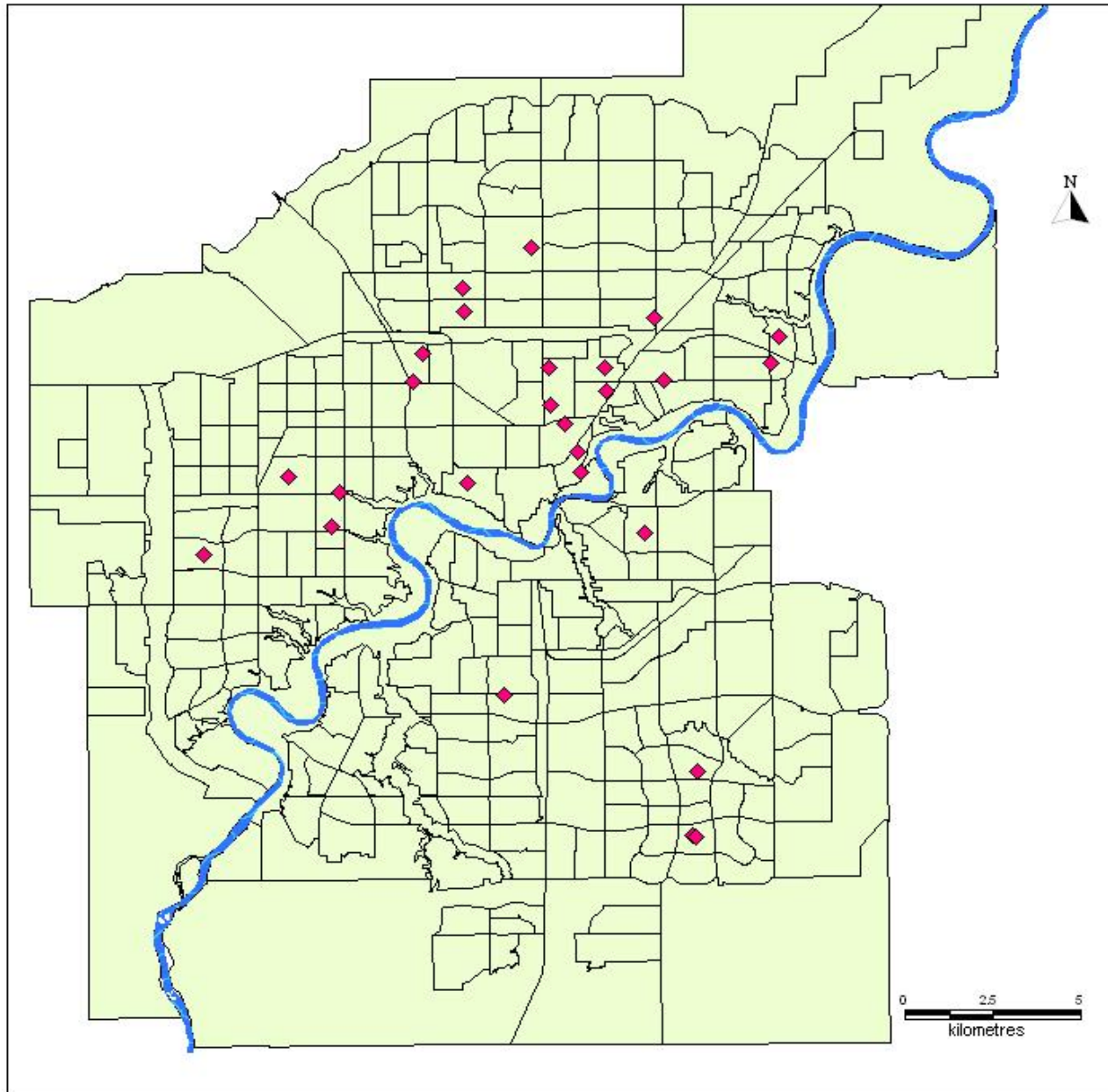
Percentage of Children Who Score in the Lowest 10th Percentile on One or More Scales



The information presented in this map is accurate to the best of our knowledge using the data available. We accept no liability for the use or misuse of this information.

Early Childhood Development Community Mapping Project (Edmonton)

Headstart Programs within Edmonton



Legend

◆ Headstart Program

Data Source: Interagency
Head Start Network

The information presented in this map is accurate to the best of our knowledge using the data available.

We accept no liability for the use or misuse of this information.

M.A.P.S. Edmonton & Area 11/2005

Mobilizing Communities

- Defining communities
- Community-based Early Childhood Development Coalitions

Role of School Authorities

- Gathering the EDI Information
- Joining the Early Childhood Coalition planning tables

Project Overview

- Five year project
- Province-wide implementation
- Voluntary
- Support from Alberta Education
 - EDI license
 - contractor for mapping etc
 - direct support to school authorities
 - community coalition support

“Reducing inequality in child development will require us to bring about enduring social change...it means that we need to provide universal access to environments that support healthy child development, not just protection for those at risk.”

Dr. Clyde Hertzman

Director
Human Early Learning
Partnership

Early Child Development (ECD) Mapping Project

Alberta Education Contacts

Sandra Shepitka-Boyle

780-422-2821; Sandra.Shepitka-Boyle@gov.ab.ca

Gail Campbell

780-427-1999; Gail.Campbell@gov.ab.ca

Toll Free 310-0000

Early Childhood Development Community Mapping (ECDCM) Project Edmonton

Dr. Susan Lynch
Coordinator, ECDCM (Edmonton)
slynch@ualberta.ca
780-488-8141

Early Child Development (ECD) Mapping Project

For more information

Offord Centre for Child Studies

<http://www.offordcentre.com/readiness/index.html>

Human Early Learning Partnership

<http://www.earlylearning.ubc.ca/>