

# Board Chairs: Leadership and Learning

---

## AGENDA

- Welcome
  - ▶ Heather Welwood
- Setting the Scene: Motivational PowerPoint
- Local Leadership Challenges:
  - ▶ “Challenges” are on each table. Each table can choose the ones they wish to discuss
- Sharing Solutions



*The PowerPoint can be found at <http://www.asba.ab.ca/perspectives/resources>, or Go to [www.asba.ab.ca](http://www.asba.ab.ca), click on Perspectives in the tool bar, then Resources in the drop down menu, for all FGM 2014 resources. The challenges and any solutions handed in will be posted after the FGM.*



## **Board Chairs:**

---

# **Leadership and Learning**

ASBA Fall General Meeting

November 18, 2014

- Heather Welwood, ASBA Consultant

# Leadership and Learning

---

Wise leaders look to others for



# Motivation

---



# Support

---



# Advocacy

---

FGM 2014 theme is:

## **Advocacy**

Advocacy is a political process by an individual or group....



# Advocacy

---

which aims to influence public policy and resource decisions within political, economic and social systems.



# Leadership

---

- Leadership is influence,  
and influence means taking people in a  
direction they wouldn't otherwise be  
going – hopefully forward.





# Leadership

---

- Ambition isn't enough to qualify you to lead. There is more to the equation.
- Being loud doesn't make you a leader. Neither does being popular.

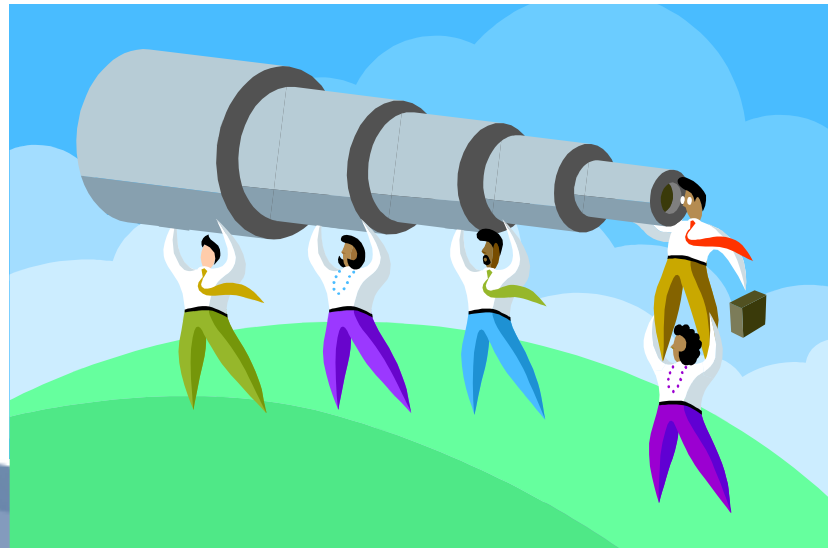


# Leadership

---

The separating factor:

**Leaders are able to get others to buy into their vision.**



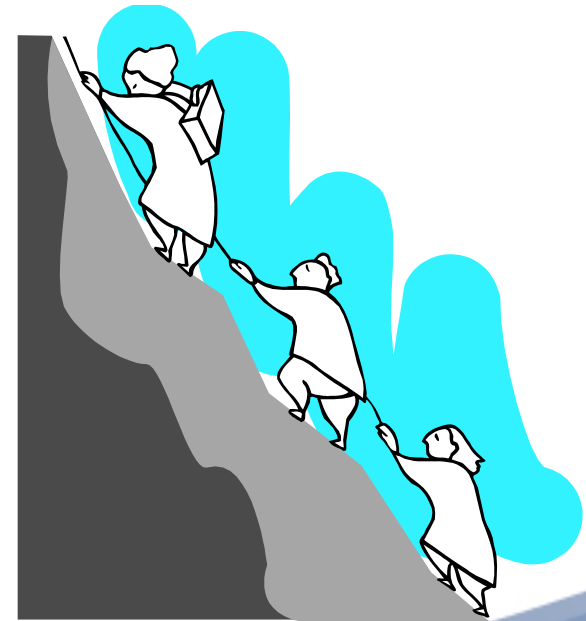
# Leadership

---

If your vision is one that touches a chord with many people

**AND**

If you can communicate it well, people will join you in reaching towards your goals.



# Teamwork

---

[https://www.youtube.com/watch?feature=player\\_detailpage&v=C8MJUox3Llg](https://www.youtube.com/watch?feature=player_detailpage&v=C8MJUox3Llg)

# Leadership Support

---

Provincially:

- ASBA
- Other board chairs
- Other organizations' leaders
- A chosen mentor



# Leadership Support

---

Locally:

- The board: share leadership skills and responsibilities with the board
- The First Team: superintendent and board
- Central office
- Staff and parents
- Communities

# Leadership Support

---

Family is number one!



# Leadership Support

---





# Leadership Challenges

---

Table work:

- Write your solutions to the scenarios of your choice on the paper provided, or
- Email your solutions to either:
  - ▶ [hwelwood@asba.ab.ca](mailto:hwelwood@asba.ab.ca) or
  - ▶ [bgarner@asba.ab.ca](mailto:bgarner@asba.ab.ca)

